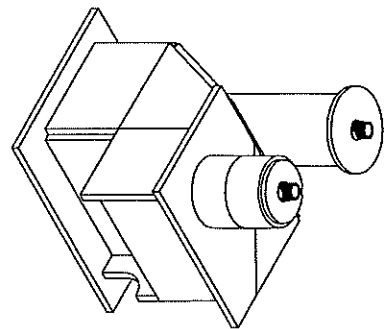
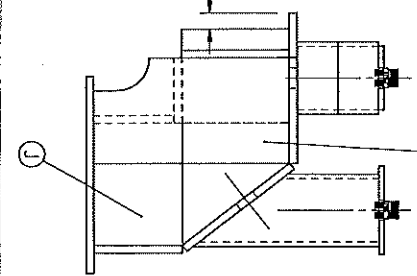
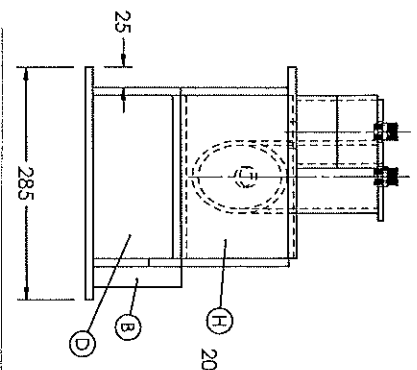
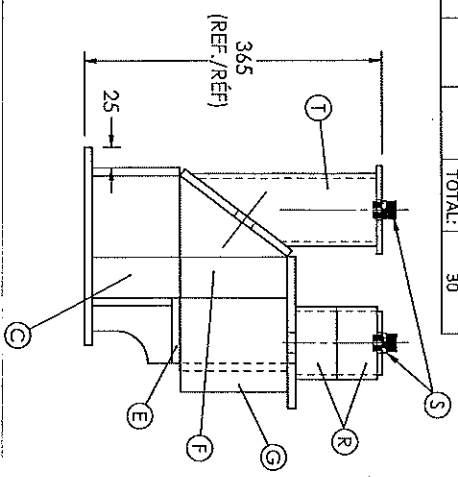
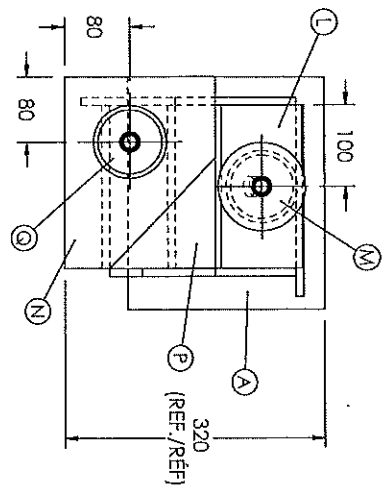


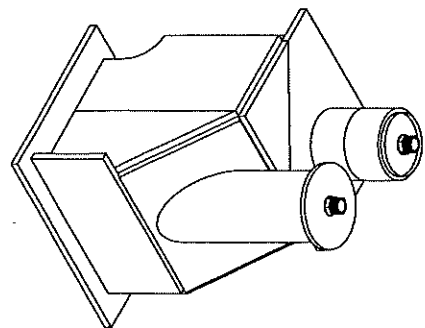
4

ITEM	QTY / QTE	T / Ep.	W / LARGEUR	L / LONGUEUR	WT / poids TOTAL (kg)
A	1	9.53	242	285	5.16
B	1	9.53	110	235	1.93
C	1	9.53	110	150	1.23
D	1	9.53	100	200	1.50
E	1	9.53	80	200	1.20
F	1	9.53	130	150	1.46
G	1	9.53	115	130	1.12
H	1	9.53	130	200	1.95
I	1	9.53	100	240	1.80
J	1	9.53	130	240	2.33
K	1	9.53	164	200	2.45
L	1	6.35	95	95	0.45
M	1	9.53	185	235	3.25
N	1	9.53	130	135	1.31
P	1	6.35	78	78	0.30
Q	1	6.35	78	78	0.30
R	2	PIPE / TUYAU 89.1 (3" STD) x 50mm			2.49
S	2	PIPE / TUYAU 89.1 (3" STD) x 227mm			0.20
T	1	PIPE / TUYAU 89.1 (3" STD) x 227mm			5.65
TOTAL:					30

3



ISOMETRIC VIEW A /
VUE ISOMETRIQUE A



ISOMETRIC VIEW B /
VUE ISOMETRIQUE B

2

NOTE:
 1. TACK WELD THE VESSEL SHOWN AND COMPLETELY SEAL ALL JOINTS USING THE WELDING PROCESSES LISTED.
 2. ALL TACK WELDS SHALL BE ON THE OUTSIDE OF VESSEL WITH MAX. 15 mm IN LENGTH.
 3. ALL WELDING TO CARRY OUT WITH BASE PLATE "A" IN THE FLAT POSITION.
 4. ALL FILLET WELDS UNLESS NOTED OTHERWISE TO HAVE A LEG LENGTH OF 10 mm(+2.0/-0)
 5. NO GRINDING TO TAKE PLACE AFTER THE FINAL CAP PASS HAS BEEN MADE.
 6. SLAG REMOVAL AND POST CLEANING OF THE WELDS SHALL BE MADE USING WIRE BRUSH.

REMARQUE:
 1. POINTEZ LE VASSEAU ET SCHELLEZ COMPLETEMENT TOUTS LES JOINTS EN UTILISANT LES PROCÉDÉS DE SOUDAGE ÉNUMÉRÉS.
 2. TOUTES LES SOUDURES DE POINTAGE DOIVENT ÊTRE EFFECTUÉES À L'EXTÉRIEUR DU VASSEAU AVEC UN MAX. 15 mm LONGUEUR.
 3. TOUTES LES SOUDURES LA PLAQUE DE BASE "A" DOIVENT ÊTRE EFFECTUÉES EN POSITION PLATE.
 4. TOUTES LES SOUDURES D'ANGLE SAUF INDICATION CONTRAIRE DOIVENT AVOIR UNE DIMENSION DE 10mm(+2.0/-0)
 5. AUCUN MEILLAGE PERMIS UNE FOIS LES PASSES DE FINITION EFFECTUÉES
 6. L'ENLEVEMENT DU LATIER ET LE POST-NETTOYAGE DES SOUDURES DOIVENT ÊTRE RÉALISÉS À L'AIDE D'UNE BROUSSE MÉTALLIQUE.

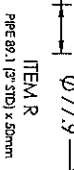
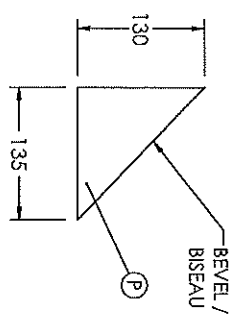
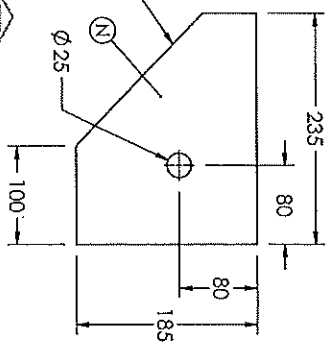
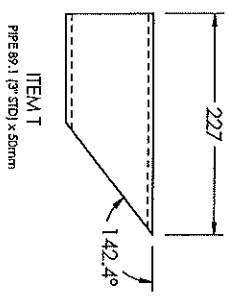
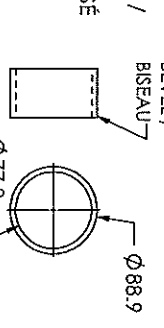
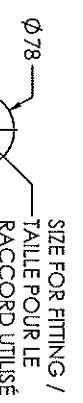
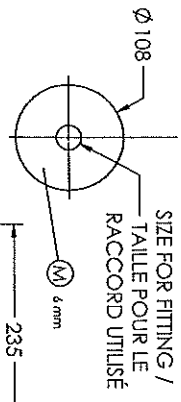
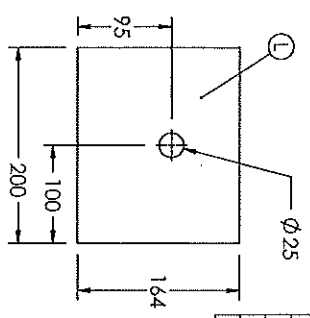
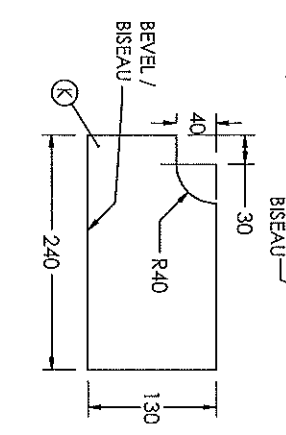
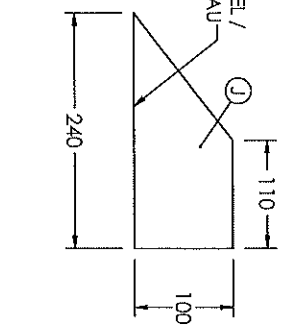
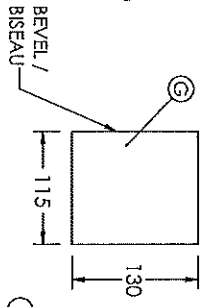
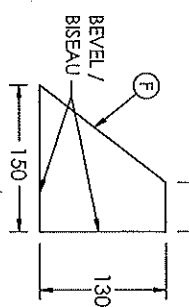
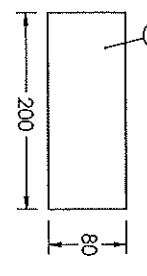
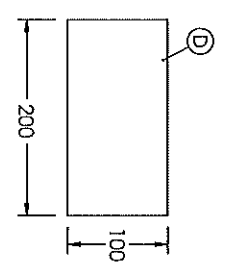
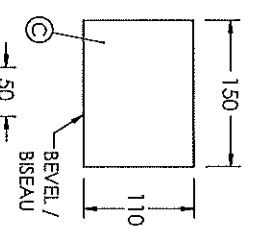
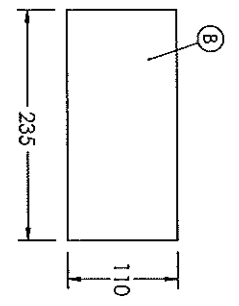
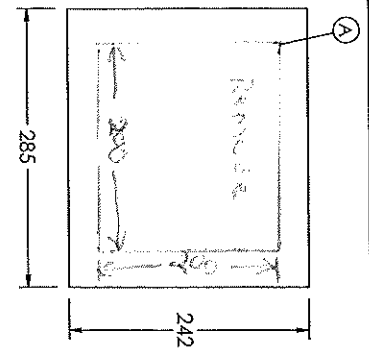
1

4

3

2

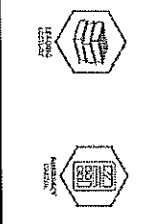
1



ITEM	QTY / QTE	T / Ep.	W / LARGEUR	L / LONGUEUR	WT / POIDS TOTAL (kg)
A	1	9.53	242	285	5.16
B	1	9.53	110	235	1.93
C	1	9.53	110	150	1.23
D	1	9.53	100	200	1.50
E	1	9.53	80	200	1.20
F	1	9.53	130	150	1.46
G	1	9.53	115	130	1.12
H	1	9.53	130	200	1.95
J	1	9.53	100	240	1.80
K	1	9.53	130	240	2.33
L	1	9.53	164	200	2.45
M	1	6.35	95	95	0.45
N	1	9.53	185	235	3.25
P	1	9.53	130	135	1.31
Q	1	6.35	78	78	0.30
R	2	PIPE / TUYAU 89.1 (3" STD) x 50mm			2.49
S	2			0.20
T	1	PIPE / TUYAU 89.1 (3" STD) x 227mm			5.65
TOTAL:					30

ALL DIMENSIONS IN MILLIMETERS / TOUTES LES DIMENSIONS SONT EN MILLIMÈTRES

TITLE/TITRE:		SCNC 2023 - POST-SECONDARY DAY 1		SHEET #		NO. DE PAGE:		SITE/TAILLE:	
WORLD PV/ CUVE SOUS PRESSION MONDIALE - PARTS / LES PIÈCES		OCMT 2023 - POST-SECONDARY JOUR 1		3 OF 3		B			
DWG. NO. / DESSIN NO.:	REV.:	SCALE / ÉCHELLE:	DESIGN / CONCEPTION:	CHIH-PENG CHEN					
SCC2023-PS1	1	1:5	DRAWN BY / DESINÉ PAR:	J.HYDE					
			DATE:	2022-12-21					



3

2

1

4

3

2

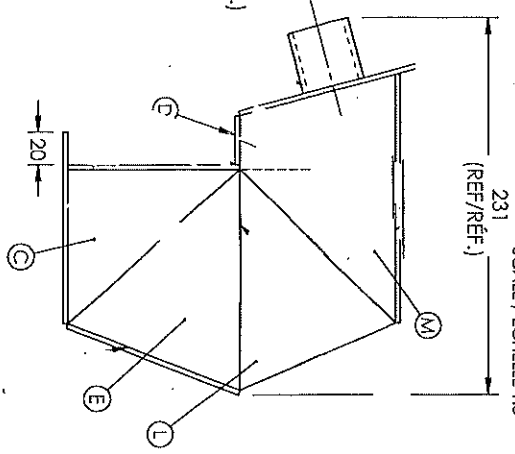
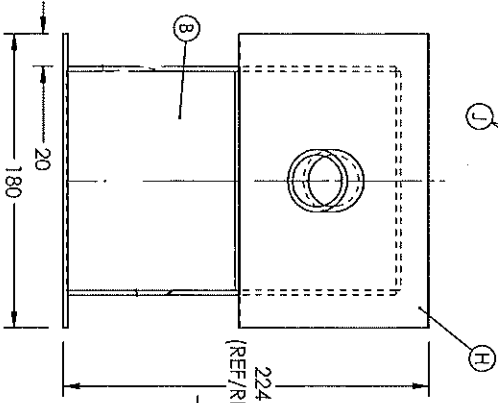
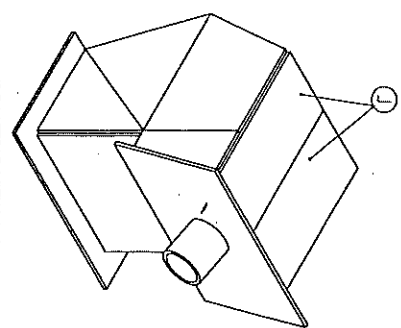
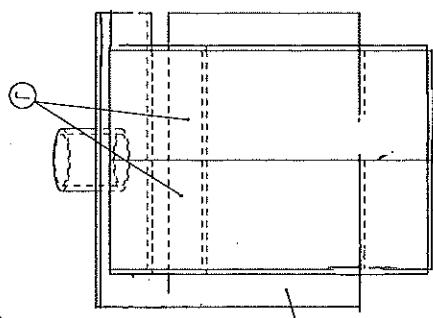
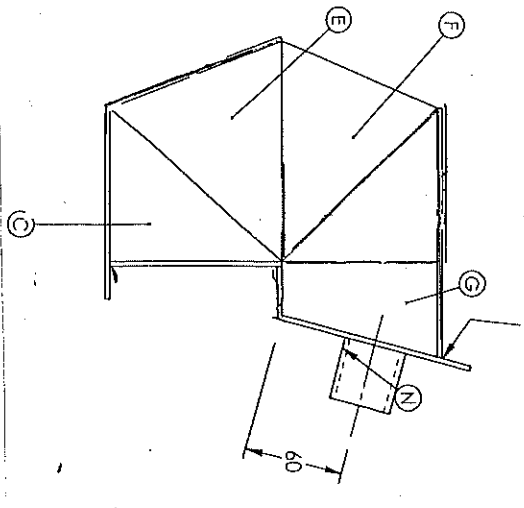
1

INSTRUCTIONS TO COMPETITORS

1. WELDING PROCESS: ISO 4063-141 (AWS A3.0 GTAW)
2. WELDING POSITIONS: ALL EXCEPT VERTICAL DOWN.
3. NO GAPS ARE ALLOWED ON THE BUTT & CORNER WELD JOINTS.
4. ALL BUTT & CORNER WELDS SHALL HAVE FULL PENETRATIONS.
5. ALL THE WELDING TO BE CARRIED OUT WITH BASE PLATE "A" IN THE FLAT POSITION.
6. ALL LEG SIZES OF FILLET WELDS: 4.0 mm WITH TOLERANCE (+2.0 mm/-0.0 mm).
7. OUTSIDE CORNER WELD RADII TO BE JUDGEMENT ASSESSED WITH GRADE (0, 1, 2, 3).
8. ALL WELDS SHALL BE COMPLETED IN ONLY ONE PASS WITH FILLER ROD ADDED.

INSTRUCTIONS AUX CONCURRENTS

1. PROCÉDE DE SOUDAGE : ISO 4063-141 (AWS A3.0 GTAW)
2. POSITIONS DE SOUDAGE : TOUTES SAUF VERTICALES BAS.
3. AUCUN ÉCART N'EST AUTORISÉ SUR LES JOINTS DE SOUDURE BOUT À BOUT ET D'ANGLE COMPLÈTES.
4. TOUTES LES SOUDURES DOIVENT ÊTRE EFFECTUÉES AVEC LA PLAQUE DE BASE "A" À PLAT.
5. TOUTES LES SOUDURES DOIVENT ÊTRE EFFECTUÉES AVEC LA PLAQUE DE BASE "A" À PLAT.
6. TOUTES LES TAILLES DE JAMBES DES SOUDURES D'ANGLE : 4.0 mm AVEC TOLÉRANCE (+2.0 mm/-0.0 mm).
7. RAYONS DE SOUDURE DES CÔNS EXTERIEURS À ÉVALUER AU JUGEMENT AVEC LA GRADE (0, 1, 2, 3).
8. TOUTES LES SOUDURES DOIVENT ÊTRE EFFECTUÉES EN UN SEUL PASSAGE AVEC LA TIGE DE REMPLISSAGE AJOUTÉE.



ISOMETRIC VIEW A /
VUE ISOMETRIQUE A
SCALE / ÉCHELLE 1:3

ISOMETRIC VIEW B /
VUE ISOMETRIQUE B
SCALE / ÉCHELLE 1:3

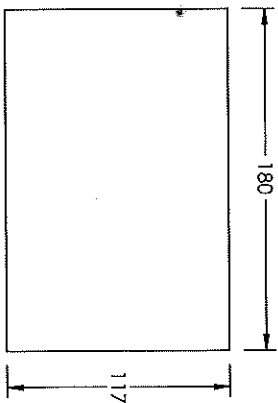
ITEM	QTY / QTE	T / ft.	W / LARGEUR	L / LONGEUR	WT / POIDS TOTAL (kg)
A	1	3	117	180	0.17
B	1	3	105	134	0.11
C	2	3	94	105	0.16
D	1	3	30	134	0.03
E	2	3	105	135	0.23
F	1	3	95	135	0.10
G	1	3	59	95	0.05
H	1	3	120	180	0.17
J	2	3	67	153	0.16
K	2	3	67	113	0.12
L	1	3	95	135	0.10
M	1	3	95	135	0.10
N	1	3	95	135	0.04
TOTAL					1.56

4

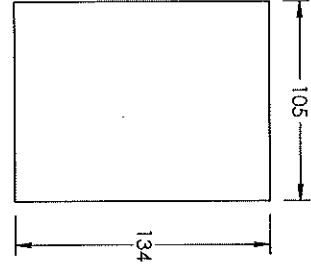
3

2

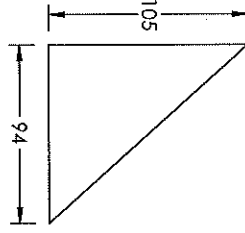
1



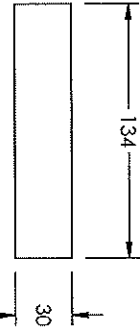
ITEM A



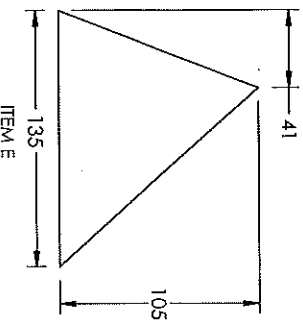
ITEM B



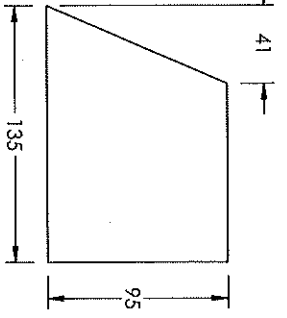
ITEM C



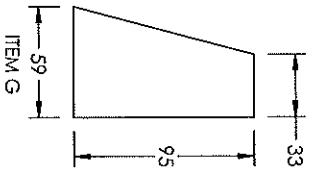
ITEM D



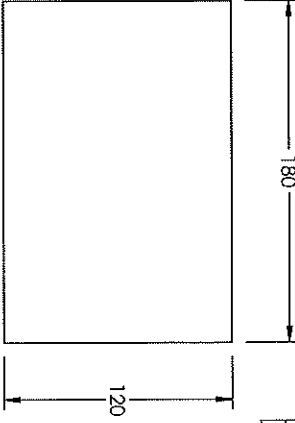
ITEM E



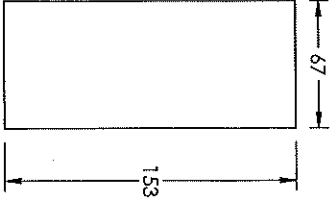
ITEM F



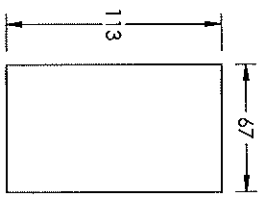
ITEM G



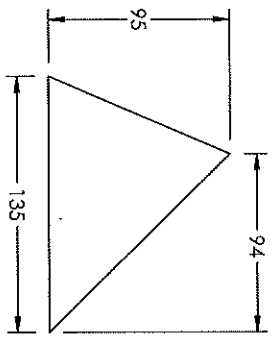
ITEM H



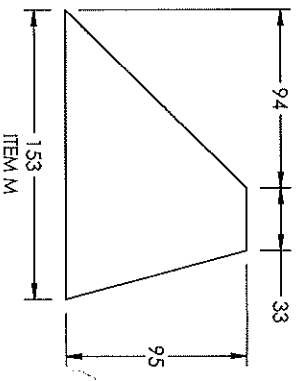
ITEM J



ITEM K



ITEM L



ITEM M

ALL DIMENSIONS IN MILLIMETERS / TOUTES LES DIMENSIONS SONT EN MILLIMÈTRES

ITEM	QTY / QTE	T / E*	W / LARGEUR	L / LONGUEUR	Wt / POIDS TOTAL (kg)
A	1	3	117	180	0.17
B	1	3	105	134	0.11
C	2	3	94	105	0.16
D	1	3	30	134	0.03
E	2	3	105	135	0.23
F	1	3	95	135	0.10
G	1	3	59	95	0.05
H	1	3	120	180	0.17
J	1	3	67	153	0.08
K	2	3	67	113	0.12
L	1	3	95	135	0.10
M	1	3	95	135	0.10
N	1	3	95	135	0.04
TOTAL:					1.48



SkillsCompétences
Canada
WINNIPEG 2023

TITLE:		SCNC 2023 - POST-SECONDARY DAY 2		SHEET #		SIZE/TAILLE:	
WORLD AL./ ALUMINIUM DU MONDE - PARTS / LES PIÈCES		OCMT 2023 - POST-SECONDAIRE JOUR 2		NO. DE PAGE:		B	
DWG. NO. / DESSIN NO.:	REV.:	SCALE / ÉCHELLE:	DESIGN/ CONCEPTION:	DRAWN BY / DESSINÉ PAR:	DATE:		
SCC2023-PSP-2b	2	1:2.5	LIU JINGFENG	J. HYDE	2023-03-01		



3

2

1